

THOMPSON & LITTON  
*Over fifty years of integrity, insight and innovation.*

# Virginia's Nanotechnology Park: Project NEEMO

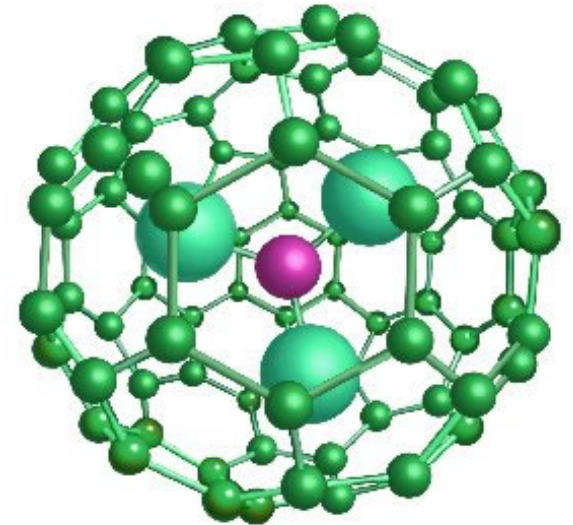
Engineers

Architects

Surveyors

Planners

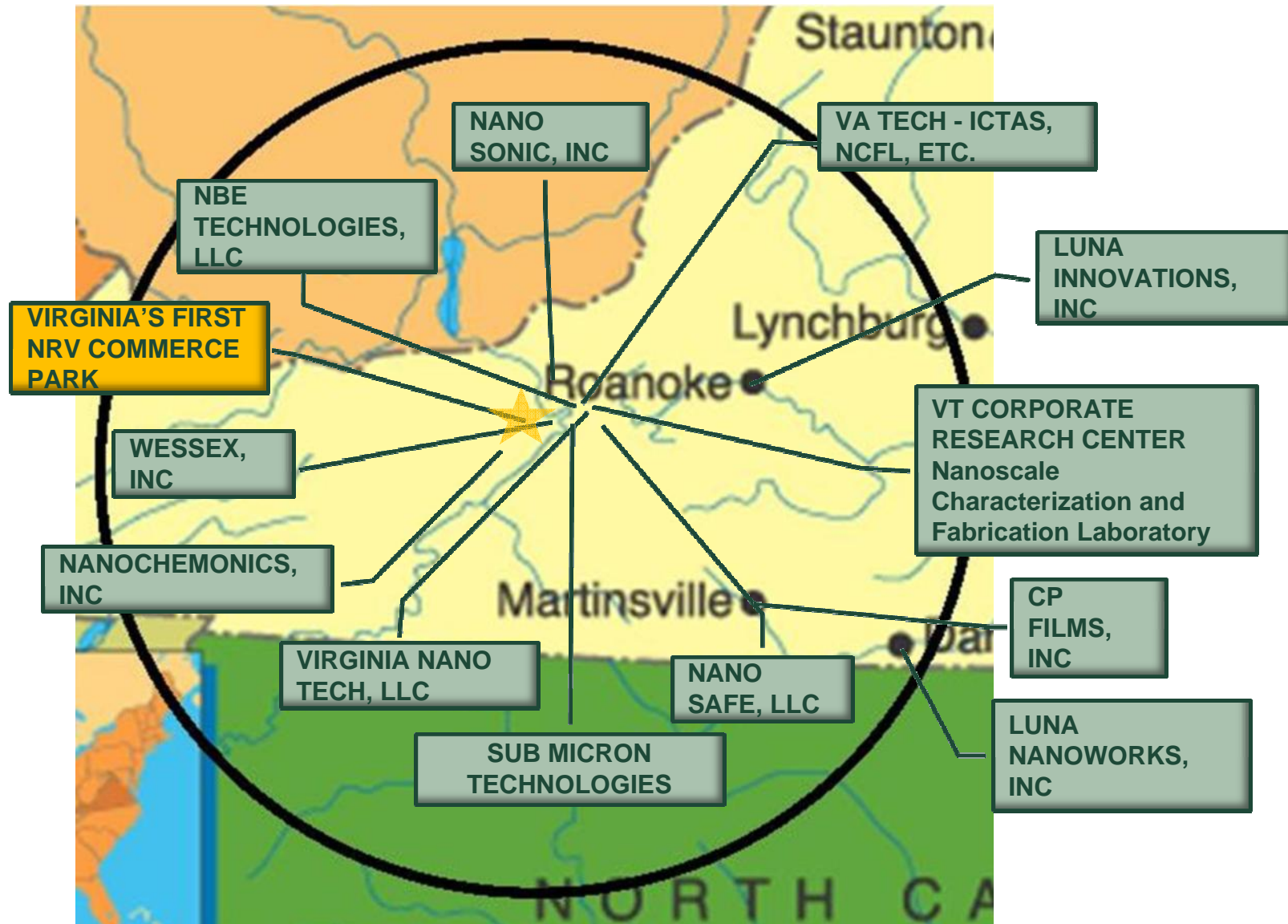
- Information to date
  - Cluster Analysis
  - Wastewater Pretreatment Study
  - Economic Adjustment Strategy
    - Visioning
    - Facility Inventory & Evaluations
- Facility Tours
- The “Concept”



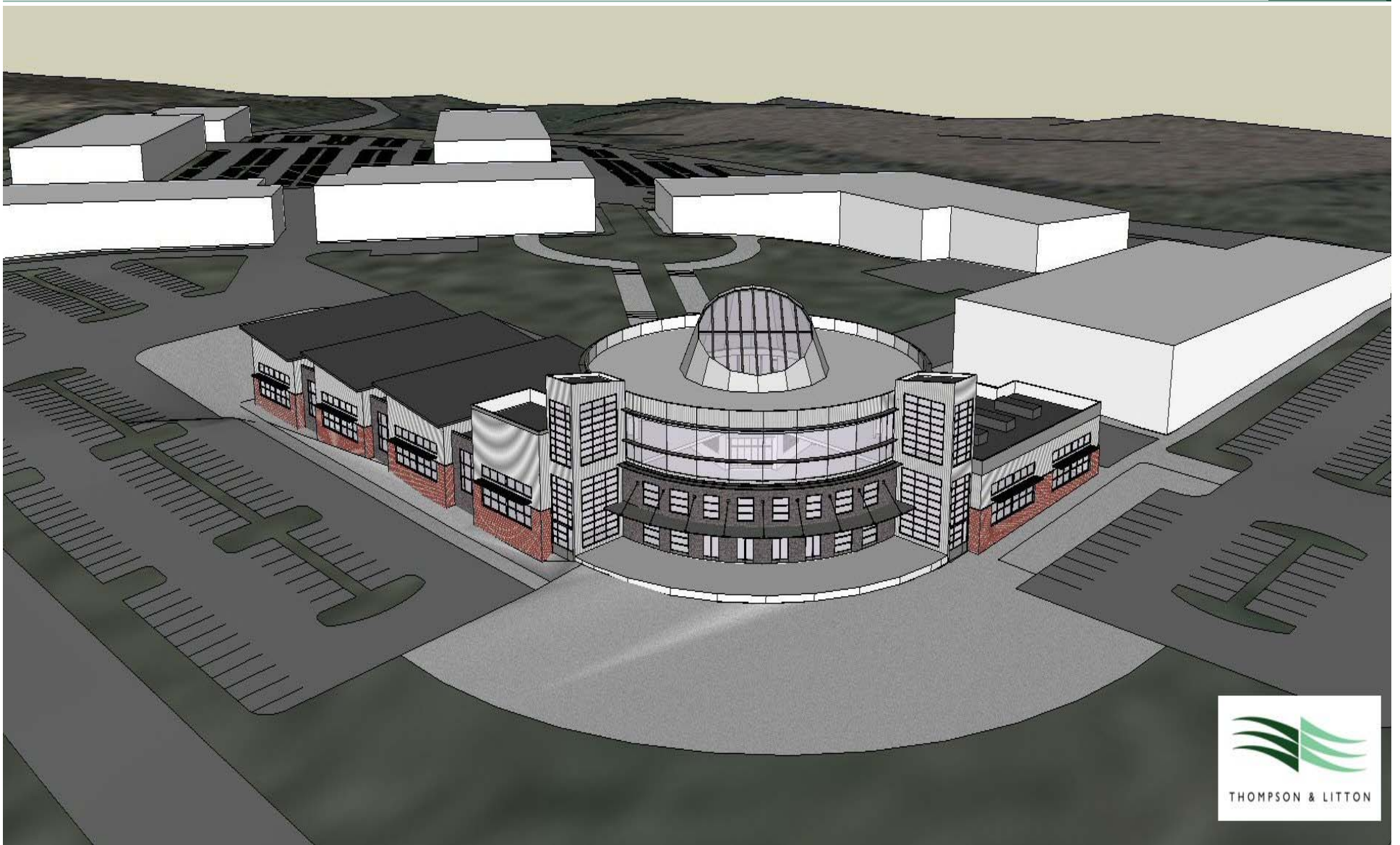
# REGIONAL NANOTECH INFLUENCE



# REGIONAL NANOTECH INFLUENCE



# ICONIC STRUCTURE



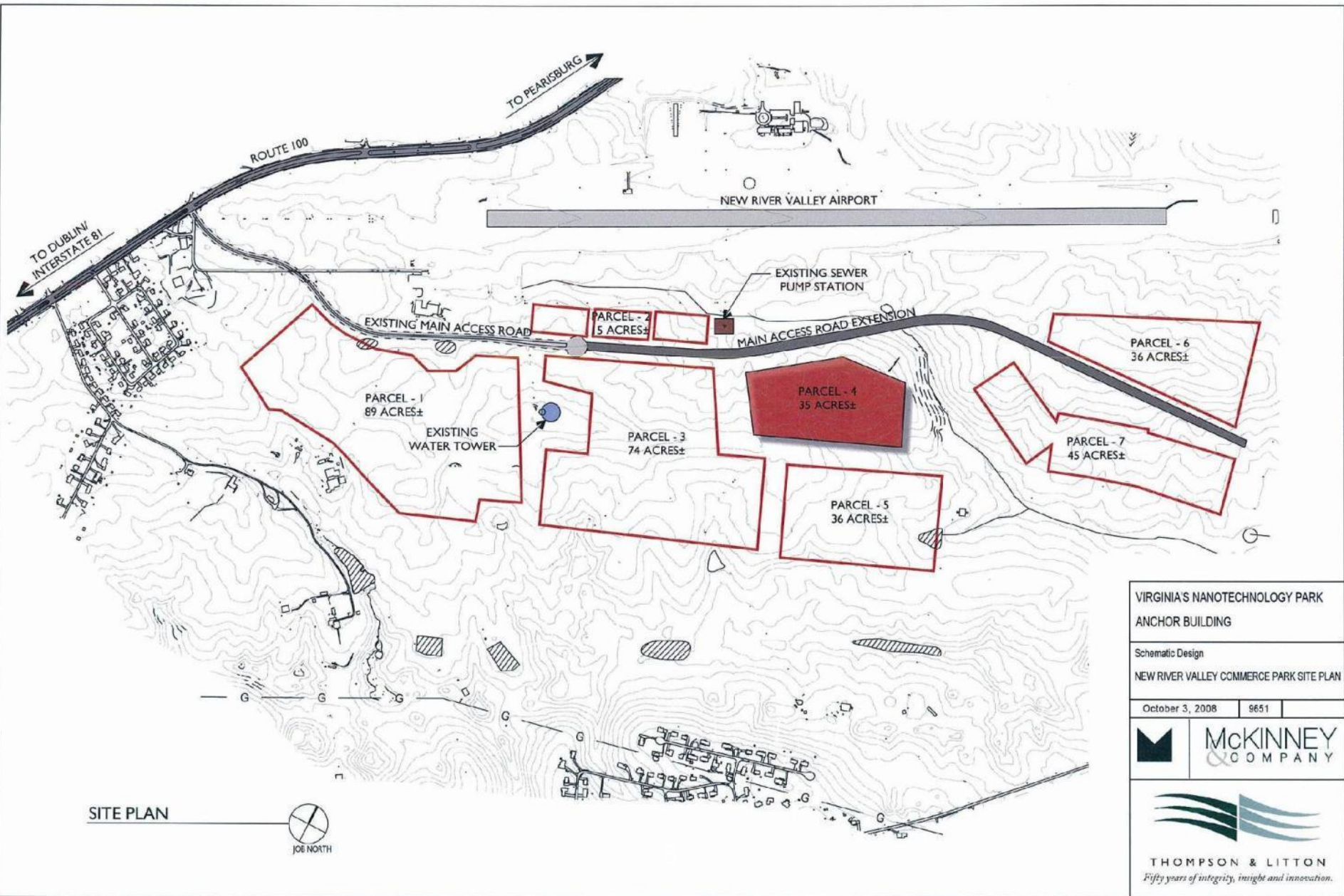
## Building Concept

- Tenant Space for:
  - Product Development, Testing, & Production
  - Advanced Manufacturing
- Educational Wing:
  - Advanced Materials Workforce Training Center
  - Community College Integrated Curriculum
- Shared Building Support – Promote Synergy

# SITE ANALYSIS

- Easily Accessible
- Utility Availability (in-place or close proximity)
- Minimize Development First Cost
- Room for Growth – Park Development
- Recognizable Identity
- Reviewed both Existing Buildings and Green Fields

# NRV COMMERCE PARK SITE



VIRGINIA'S NANOTECHNOLOGY PARK  
ANCHOR BUILDING

Schematic Design  
NEW RIVER VALLEY COMMERCE PARK SITE PLAN

October 3, 2008	9651
-----------------	------

**MCKINNEY & COMPANY**

**THOMPSON & LITTON**  
*Fifty years of integrity, insight and innovation.*



# PHASING APPROACH

- Refine and Implement Marketing Strategy
- Provide immediate Existing Space – NRV Competitiveness Center
- Continue Commerce Park Utility Infrastructure Improvements
- Extend Commerce Park Access Road in concert with Land Development needs (excavation, grading, SWM)
- Phase One Site Development
- Develop Anchor Building for Nanotechnology Park
- Prepare future building sites for spin-off and new companies
- Incremental build-out of Master Plan

# FUNDING SOURCES



Economic Development Administration (EDA) \$7,000,000

Commerce Park Site Contribution \$350,000

Virginia Department of Transportation \$450,000

Shareholders \$7,200,000

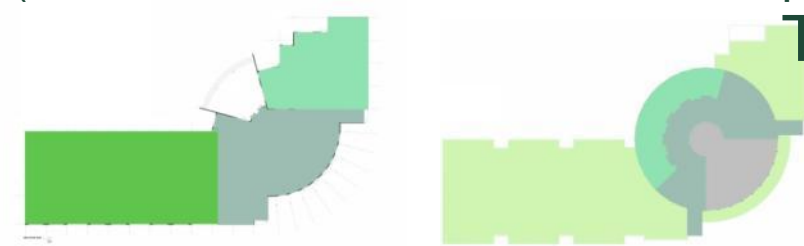


Subtotal \$15,000,000

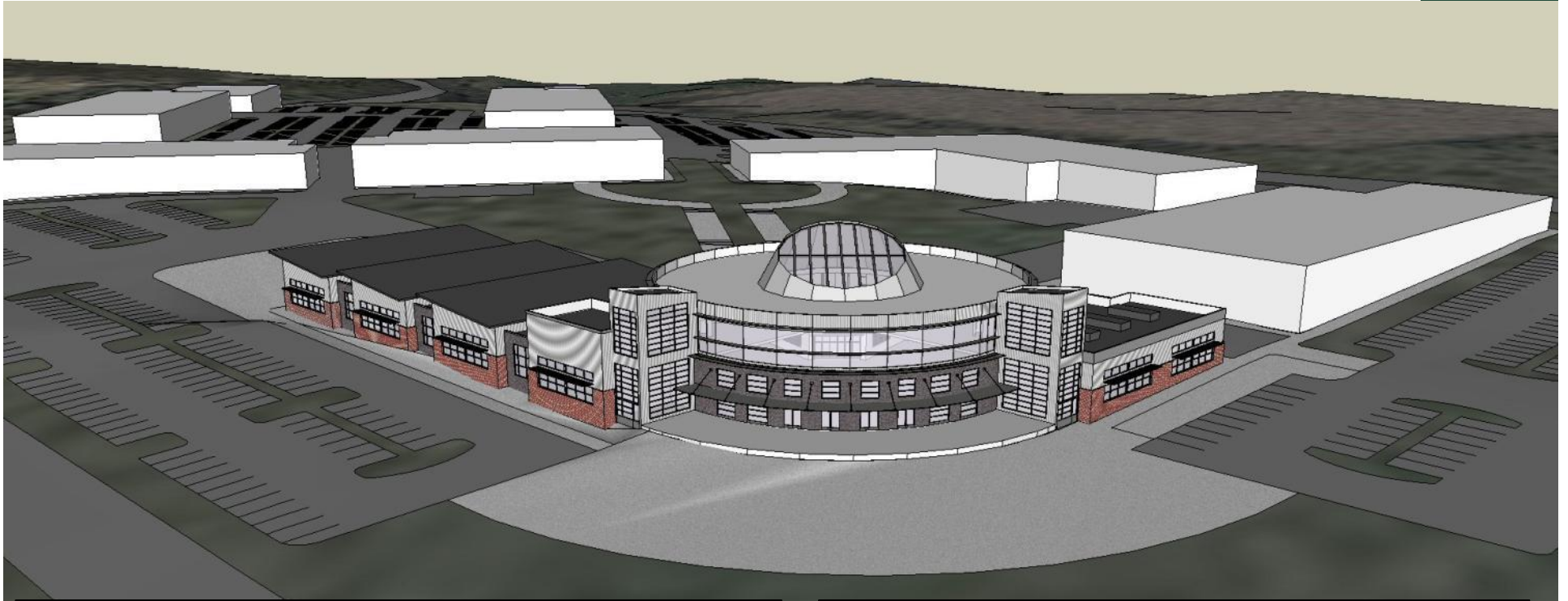
Public Education Funds \$5,900,000

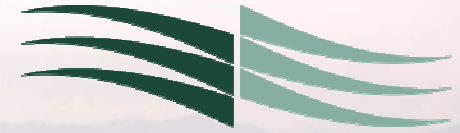
(Stimulus, Bonds, Workforce Development Funds)

**Total** \$20,900,000



# 3-D RENDERING – Aerial fly-over





THOMPSON & LITTON  
*Over fifty years of integrity, insight and innovation.*

## Q & A

Engineers

Architects

Surveyors

Planners